

PLEASE CHECK WWW.MOLEX.COM FOR LATEST PART INFORMATION

Part Number: [0916580020](#)
Status: **Active**
Overview: [trackit153 traceability pad](#)
Description: track-it™, Traceability Pad

Documents:

3D Model	Product Specification PS-91658-010 (PDF)
Packaging Specification (PDF)	RoHS Certificate of Compliance (PDF)
Drawing (PDF)	

General

Product Family	Accessories
Series	91658
Component Type	Module ID
Overview	trackit153 traceability pad
Product Name	Traceability Pad

Physical

Circuits (Loaded)	N/A
Material - Metal	Copper-Nickel-Zinc
Packaging Type	Embossed Tape on Reel
Temperature Range - Operating	-40°C to +85°C

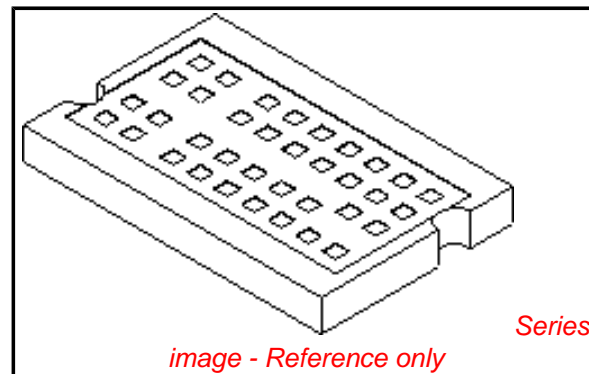
Solder Process Data

Lead-free Process Capability	Reflow Capable (SMT only)
Process Temperature max. C	260

Material Info

Reference - Drawing Numbers

Packaging Specification	PK-91658-011, PK-91658-060
Product Specification	PS-91658-010
Sales Drawing	SD-91658-010



EU RoHS

**ELV and RoHS
Compliant**
**REACH SVHC
Contains SVHC: No**
**Halogen-Free
Status**
Halogen-Free

China RoHS



**Need more information on product
environmental compliance?**

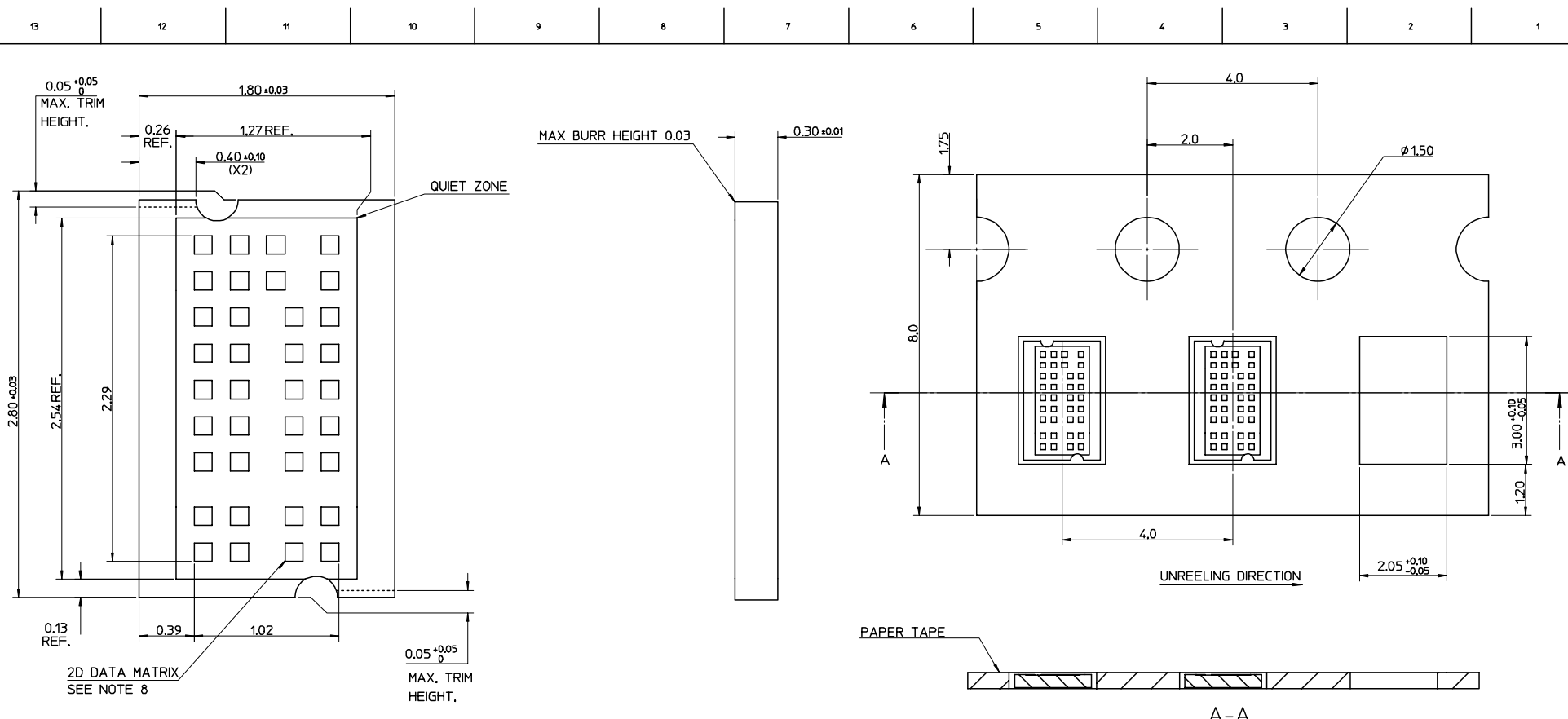
Email productcompliance@molex.com
 For a multiple part number RoHS Certificate of
 Compliance, [click here](#)

Please visit the [Contact Us](#) section for any
 non-product compliance questions.

Search Parts in this Series

[91658Series](#)

Use With
PCBs



- NOTES:
1. MODULE ID PAD MATERIAL CuNi18Zn20 0.30 REF THK.
 2. 2D DATA MATRIX TO BE MARKED ON PAD USING LASER ETCHING.
 3. CONTRAST RATIO TO BE 50% MINIMUM.
 4. RECOMMENDED PWB PAD DIMENSIONS: 2.95 x 1.95.
 5. PAD FLATNESS TO BE 0.1.
 6. PARTS TO BE SHIPPED ON REEL. PAPER TAPE TO BE USED AS SHOWN. COVER TAPE TO BE TRANSPARENT POLYESTER.
 7. PITCH TOLERANCE OVER ANY 10 PITCHES ±0.20
 8. 8 ROWS X 18 COLUMNS, ECC 200.
 9. UNIQUE 9 DIGIT SEQUENTIALLY INCREASING NUMBER IS ENCODED INTO DATA MATRIX FORMAT ON EACH PAD.
FIRST PAD HAS ENCODED NUMBER *00000001 AND SUBSEQUENT PADS HAVE SEQUENTIALLY INCREASING ENCODED NUMBER.
DIGIT ONE (*) IS A UNIQUE CUSTOMER ALPHANUMERIC CHARACTER IDENTIFIER.
 10. 2D DATA MATRIX IS TO BE READABLE WITH 'QUADRUS EZ' SCANNER.
 11. 4 EMPTY POCKETS ALLOWED ON A REEL.
 12. PARTS PER REEL: 8000 PARTS

- NOTES:
13. PART NUMBER 916580020 REFERS TO A***** CODE OPTION.
 14. CUSTOMER IDENTIFIER 'A' IS RESERVED FOR SAMPLES AND MARKETING PURPOSES ONLY.
 15. NEW CUSTOMERS WILL BE ALLOCATED NEW MOLEX PART NUMBERS WITH ASSOCIATED CUSTOMER ALPHANUMERIC CHARACTER IDENTIFIER.

ADD NOTES 13 TO 15 EC NO: E2005-0309 DRWN:DCARTON 2004/10/29 CHKD: 2004/10/29 APPR:EFOLAN 2004/11/02	QUALITY SYMBOLS ▽-0 ▽C=0	GENERAL TOLERANCES (UNLESS SPECIFIED)		SCALE 10:1	DESIGN UNITS METRIC	THIRD ANGLE PROJECTION	REVISE ON CAD ONLY		
			mm	INCH	DIMENSION STYLE MM ONLY		TITLE TRACEABILITY PAD		
		4 PLACES ± --- ± ---	3 PLACES ± --- ± ---	2 PLACES ± 0.10 ± ---	1 PLACE ± 0.2 ± ---	DRAWN BY DCARTON	DATE 2004/08/26	MATERIAL NO. 91658 0020	
		ANGULAR ± 2 °				CHECKED BY EFOLAN	DATE 2004/08/26	DOCUMENT NO. SD-91658-010	SHEET NO. 1 OF 1
DRAFT WHERE APPLICABLE MUST REMAIN WITHIN DIMENSIONS				APPROVED BY MWILHITE	DATE 2004/08/26	THIS DRAWING CONTAINS INFORMATION THAT IS PROPRIETARY TO MOLEX INCORPORATED AND SHOULD NOT BE USED WITHOUT WRITTEN PERMISSION			